

# ONE UNIVERSITY TWO CAMPUSES

## HONG KONG



## ZHUHAI, MAINLAND CHINA



Beijing Normal University -  
Hong Kong Baptist University  
United International College

## OUR VISION

To be a leading liberal arts University in Asia for the world delivering academic excellence in a caring, creative and global culture.

## OUR MISSION

HKBU is committed to academic excellence in teaching, research and service, and to the development of the whole person in all these endeavours built upon the heritage of Christian higher education.

### Learn more about us



HKBU website



Facts and figures

### Donate and support HKBU



f Hong Kong Baptist University 香港浸會大學

hkbaptistu

hkbaptistu

Hong Kong Baptist University

hongkongbaptistu

香港浸会大学

香港浸会大学

知 香港浸会大学

香港浸会大学

香港浸会大学

香港浸会大学



香港浸會大學

HONG KONG BAPTIST UNIVERSITY

# HKBU

A Leading University in Asia for the World



## OUR EDUCATION

We nurture future-shaping students through a broad-based, transdisciplinary and creativity-inspiring education, while embracing technology and fostering sustainability.

## DIVERSE LEARNING EXPERIENCE



## FIGURES AT A GLANCE



**12,000+**  
Student enrollment\*



**370+**  
International exchange partnerships#



**1,100+**  
Faculty members and teaching staff#



**190**  
Entrepreneurship activities#



**59**  
World's Top 2% Most-cited Scientists 2023#



**50+**  
Research centres



**1,250+**  
Articles published in Top 10% Journal#

\*Data as of October 2022, including Undergraduate, Taught Postgraduate and Research Postgraduate  
#Facts & Figures 2022/23

No. 2

THE Impact Rankings  
2024 for UN SDG 4:  
Quality Education

No. 46

THE Young University  
Rankings 2024

No. 63

THE Asia University  
Rankings 2024

No. 64

QS Asia University  
Rankings 2024

No. 101-200

THE Impact  
Rankings 2024

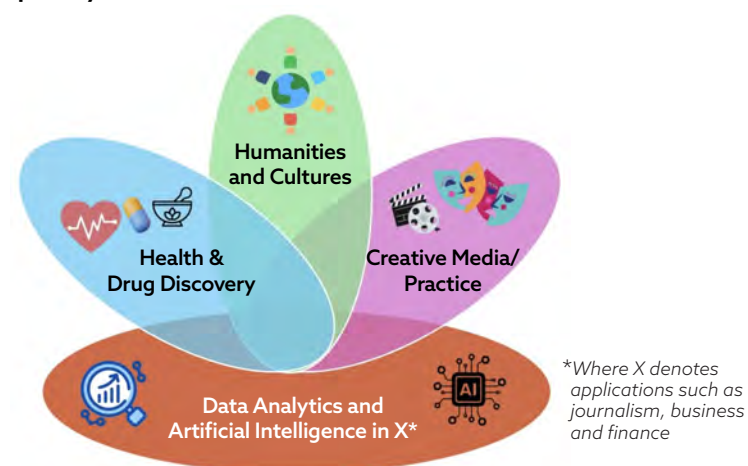
No. 252

QS World University  
Rankings 2025

## OUR RESEARCH

We nurture the next generation of researchers by conducting world-leading investigations that extend the frontiers of knowledge, tackle global challenges, and benefit the community at home and abroad.

### Four Transdisciplinary Research Clusters



## PIONEERING INNOVATION IN ART TECH



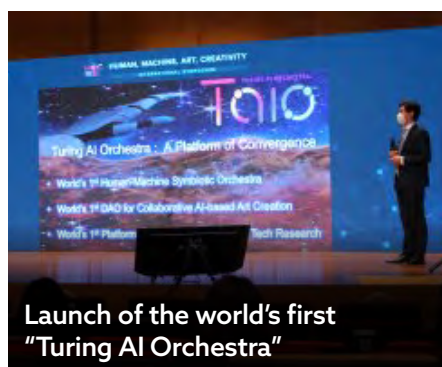
Building platform technologies for symbiotic creativity in Hong Kong



Future cinema systems: next-generation art technologies



The world's first human-machine collaborative performance featuring AI and the HKBU Symphony Orchestra



Launch of the world's first "Turing AI Orchestra"

## MEDICAL & HEALTH RESEARCH AND PRACTICE

- **Centre for Chinese Herbal Medicine Drug Development** developed Hong Kong's first botanical drug that succeeded in the Investigational New Drug Application to the U.S. Food and Drug Administration (FDA), with another botanical drug granted orphan drug designation by the U.S. FDA
- Developed an aptamer drug which was granted orphan drug designation by the U.S. FDA
- Appointed as the contractor for the service deed of **Hong Kong's first Chinese medicine hospital**
- Organised the inaugural **FoodMed Conference** to explore food's therapeutic potential



Life Science Imaging Centre

## HUMANITIES AND CULTURES

- Globally-renowned speakers participated in the International Symposium on Humanities, Societies and Digital Futures
- Long-standing Chinese Writers' Workshop and International Writers' Workshop foster regular scholarly exchange



## POWERED BY

- AI Platform
- Visualization Research Centre
- Motion Capture and Visualization Laboratory
- Life Science Imaging Centre
- Jockey Club Campus of Creativity featuring state-of-the-art facilities for music, film, television, game design, and other creative disciplines



Visualization Research Centre